

September/October 2021

It's hard to believe that we are fast approaching the end of the year, with winter on its way, not least Halloween, Diwali, Christmas and Hanukkah just around the corner.

The major works have progressed really well, which is the result of having a great team on site and having the support of the residents and Residents Association. We could not have achieved so much without your cooperation.

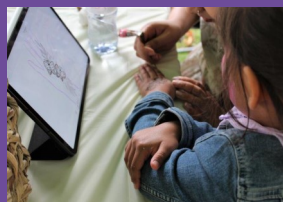
Please see overleaf for works update.

### COVID-19 SAFE WORKING PRACTICES ON SITE

Keeping you and our team safe is our top priority. We have a number of measures in place and can confirm that these measures are Covid-19 secure and in line with government guidelines.

### Tara "Get Together" 4th September 2021

We wanted to share some photos with you. I am sure you will agree it was a great afternoon, enjoyed by those that attended the event.



#### Site Team



Romeo:

#### Site Manager



Denise

#### Resident Liaison Officer

07515 919 736

Or

0800 988 2030



Debra

#### Project Administrator

01322 612 320

Or

0800 023 1735

## Progress so far

**Window Repairs:** Completed estate wide.

**Ventilation Works:** Completed.

**Loft Insulation:** Works are ongoing estate wide.

**Communal Windows:** Works are almost completed.

**Communal Redecorations:** Decorations continue in Cottesloe, Fulmer, Dinton and Fingest Houses.

**Front Entrance Doors:** The door installations are now complete, with some minor defects to be rectified.

**Guttering:** High level works continue, to clear/clean guttering estate wide. These works will take 1 day to complete each block.

While we carry out the repairs to the guttering there will be some disruption to movement around the estate. We will put up posters to let you know when the work will happen. As part of the traffic management, there will be a Traffic Marshall in place, during working hours.

We will also need to suspend parking bays around the buildings where we are carrying out repairs to the guttering and will provide 48 hours' notice before any suspension takes place.

In order to reach the guttering, we will need to work at high level and would ask that during this time you keep windows & curtains and blinds closed.

**External Wall Insulation: (EWI)** Minor repairs to external walls where required. External wall insulation comprises of a non-combustible insulation layer fixed to the existing wall, with a protective render or decorative finish. This work is ongoing estate wide

**Replacement Flooring:** Work to replace flooring has begun at Kimble House. This will be used as a benchmark before progressing to other blocks (A benchmark is an evaluation of the process used and quality achieved).

**Fire Risk Assessments (FRA):** These works continue, across all blocks. Simpson and Tickford Houses were completed this month, moving on to Cottesloe House this month. (Fire Risk Assessment's assess all the common parts of a building in order to meet the fire assessment risk requirements, in line with government guidelines).

