

Ernest Harriss House Community Hub

1. Local area priorities
 1. Our top priorities
 2. Things we love
 3. Things we'd change
2. Ernest Harriss House Community Hub priorities
 1. Overall priority activities for the hub (two visuals)
 2. Principles for the hub operator
3. Ernest Harriss House Community Hub indicative floorplan
 1. Indicative floorplan & activities
 2. Technical floorplan

Our top priorities

1. Addressing health and well-being, for example through mental health support (including access to green space) and accessible health services and facilities
2. Increasing safe spaces, for example social spaces for community gatherings or a one-stop-shop for support services and mentoring
3. Establishing community support services, for example a (digital) noticeboard or glossary for sharing existing resources, social prescribing or legal services, safe spaces and shelters for vulnerable people, and support for newcomers to the area, including maps and resources
4. Community activities and facilities, for example creating an accessible space for people to get online, more free community events and exercise activities, providing spaces for young people and promoting intergenerational learning and skill-building workshops
5. Enhancing housing and affordability, in particular affordable housing with family-sized homes and lowering the cost of living, and a more diverse range of shops
6. Improving the environment, for example by supporting sustainability projects and initiatives and increasing green and food-growing spaces to combat pollution
7. Enhancing awareness and access, for example by promoting community activities and proactively providing information about services for easy access to resources and support

Things we love

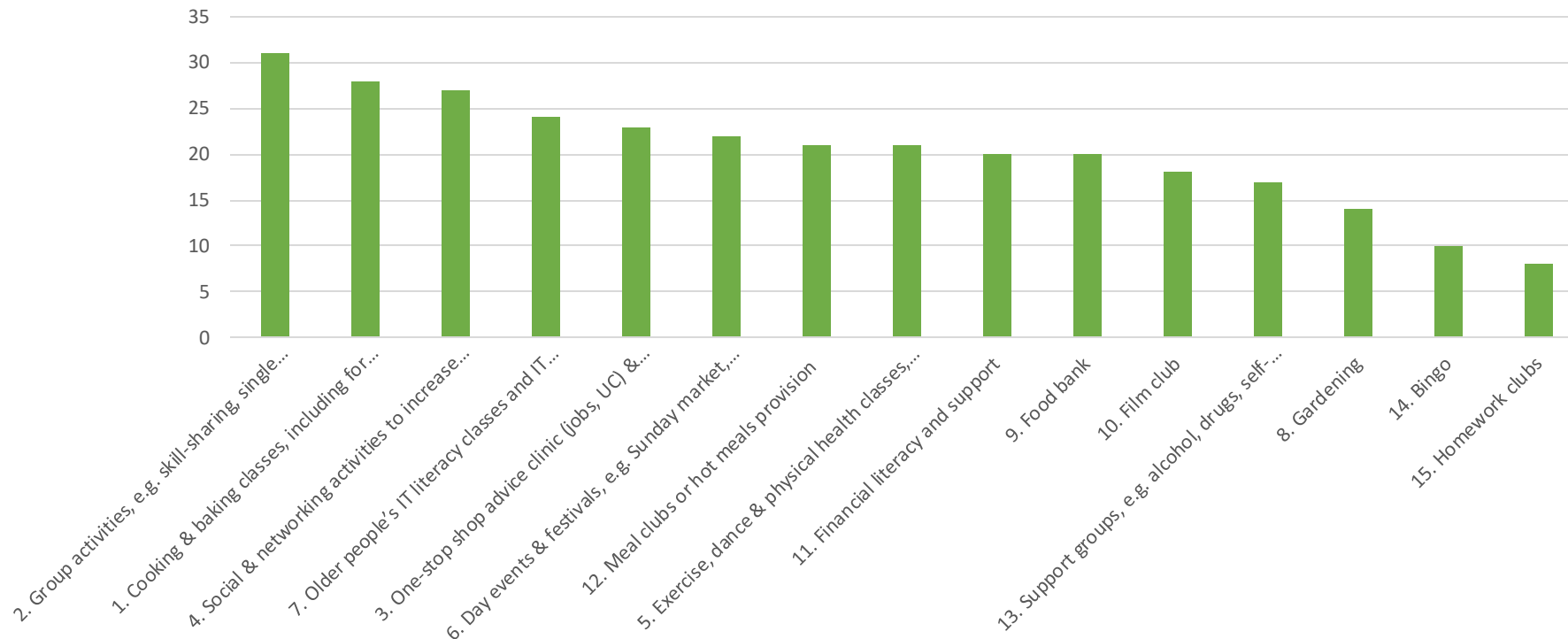
- Accessibility and convenience: there are shops, cafes, and transport links nearby, which are convenient and make life easier.
- Sense of community: residents feel safe and engaged through shared spaces and community events which promote inclusivity and social cohesion.
- Diversity: there's a diverse community characterised by a mix of cultures, languages and age groups, contributing to a rich cultural tapestry and vibrant community spirit.
- Recreational and green spaces: there are green spaces, parks, and leisure facilities offering opportunities for relaxation, recreation and outdoor activity.
- Infrastructure and services: there are good transport links, schools and libraries, enhancing quality of life and community well-being.
- Social support and services: availability of social support networks, advice services, food banks, soup kitchens, and community initiatives, addressing various needs and fostering a caring community ethos.

Things we'd change

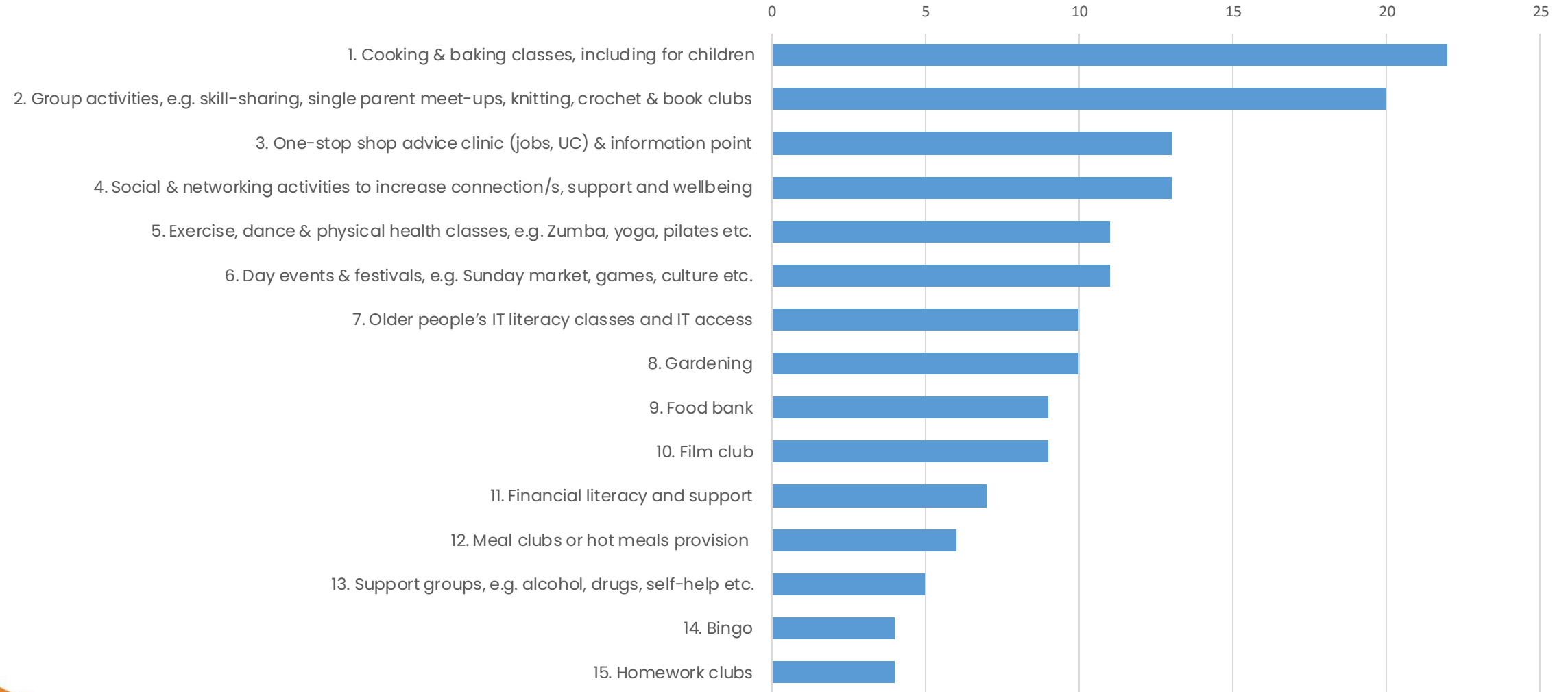
- Access to services and support: access to translation services, legal aid and support for vulnerable populations, emphasising the need for improved communication and resources.
- Community activities: lack of social spaces, activities and events, particularly for young and older people, resulting in a lack of connection between different groups.
- Housing, safety and environmental concerns: issues related to traffic, air pollution and housing quality and cleanliness, highlighting the need for better housing and environmental conditions, waste management and green spaces.
- Health and well-being support: limited access to mental health services, community support for addictions and safe spaces, indicating a need for improved support and networks.
- Access to facilities: challenges in access to public facilities such as toilets, meeting spaces and public information, emphasising the importance of shared spaces and connection.
- Social inclusion and equality: isolation, inequality and divided communities, highlighting the importance of fostering social inclusion, diversity and equitable access to resources.
- Communication and information-sharing: lack of clear information and awareness about available services, showing the need for clearer communication channels.

EHHCH Overall Priorities

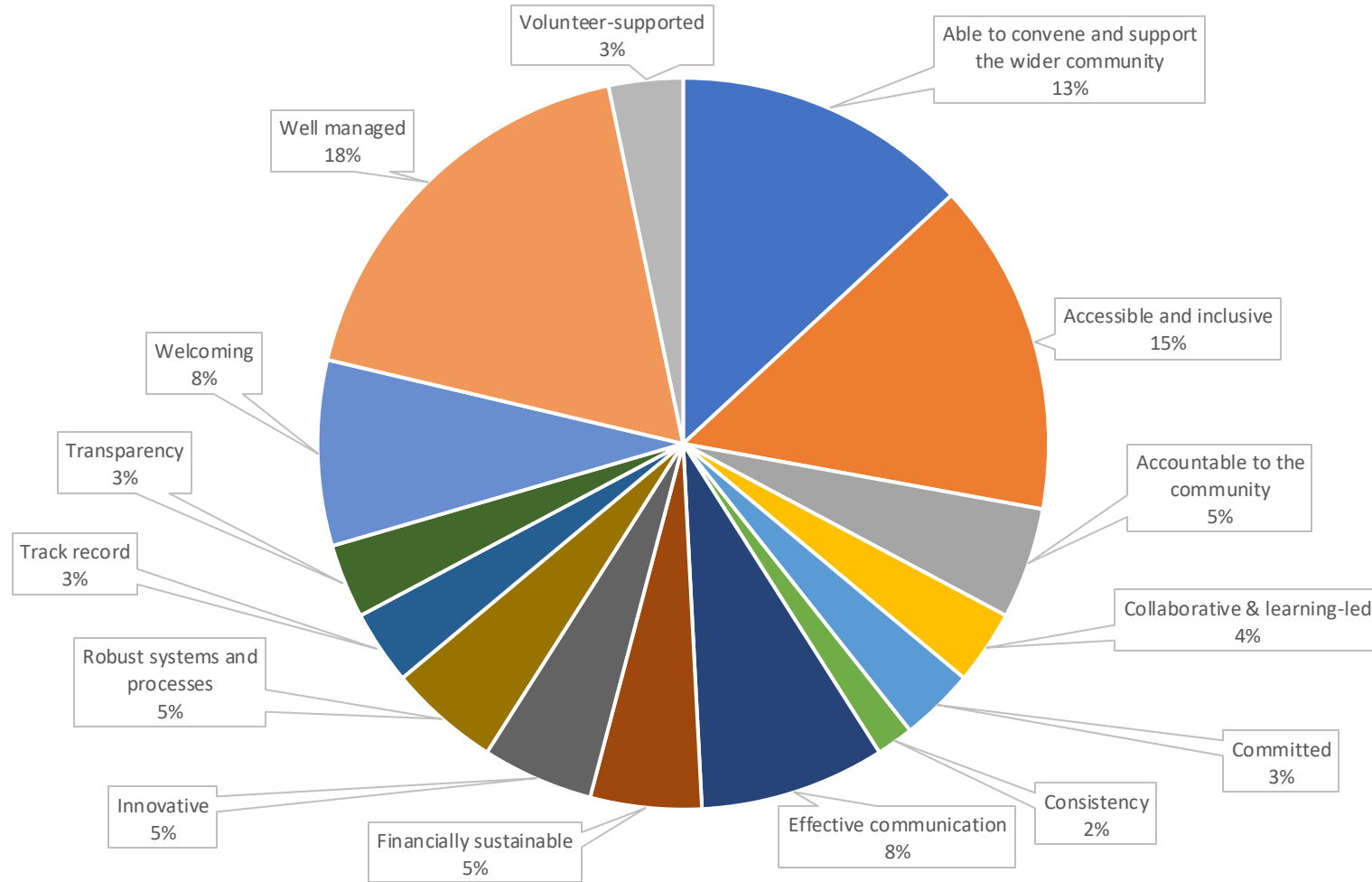
EHH: Total positive sentiment in votes (Workshop votes + Survey 'Excellent' and 'Very Good' votes)



EHCH Overall Priorities



Responses on how the hub should be run



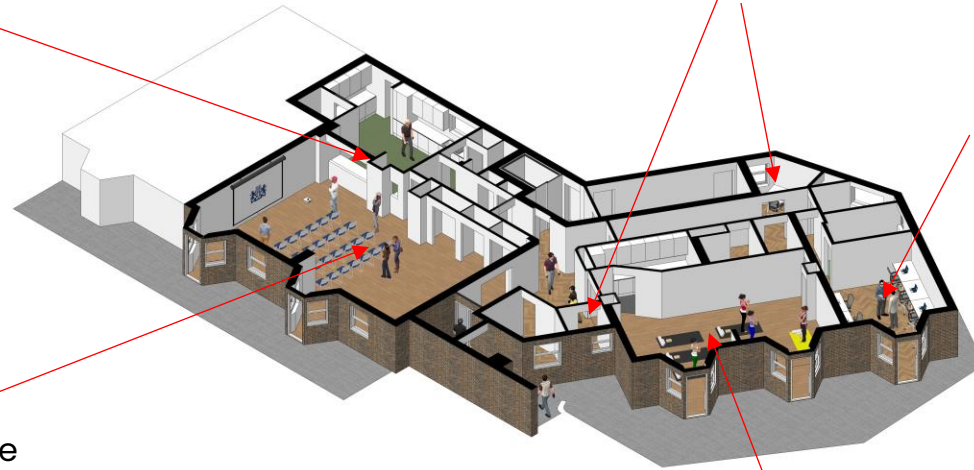
This pie chart identifies the **key requirements** people feel are most important for the hub, or whoever is running it, to deliver. It is based on all of the written responses being analysed and coded to one or more categories.

EHHCH indicative floorplan

Cooking & baking classes,
meal clubs & hot food
provision, food bank

One stop shop advice
sessions or surgeries,
support sessions

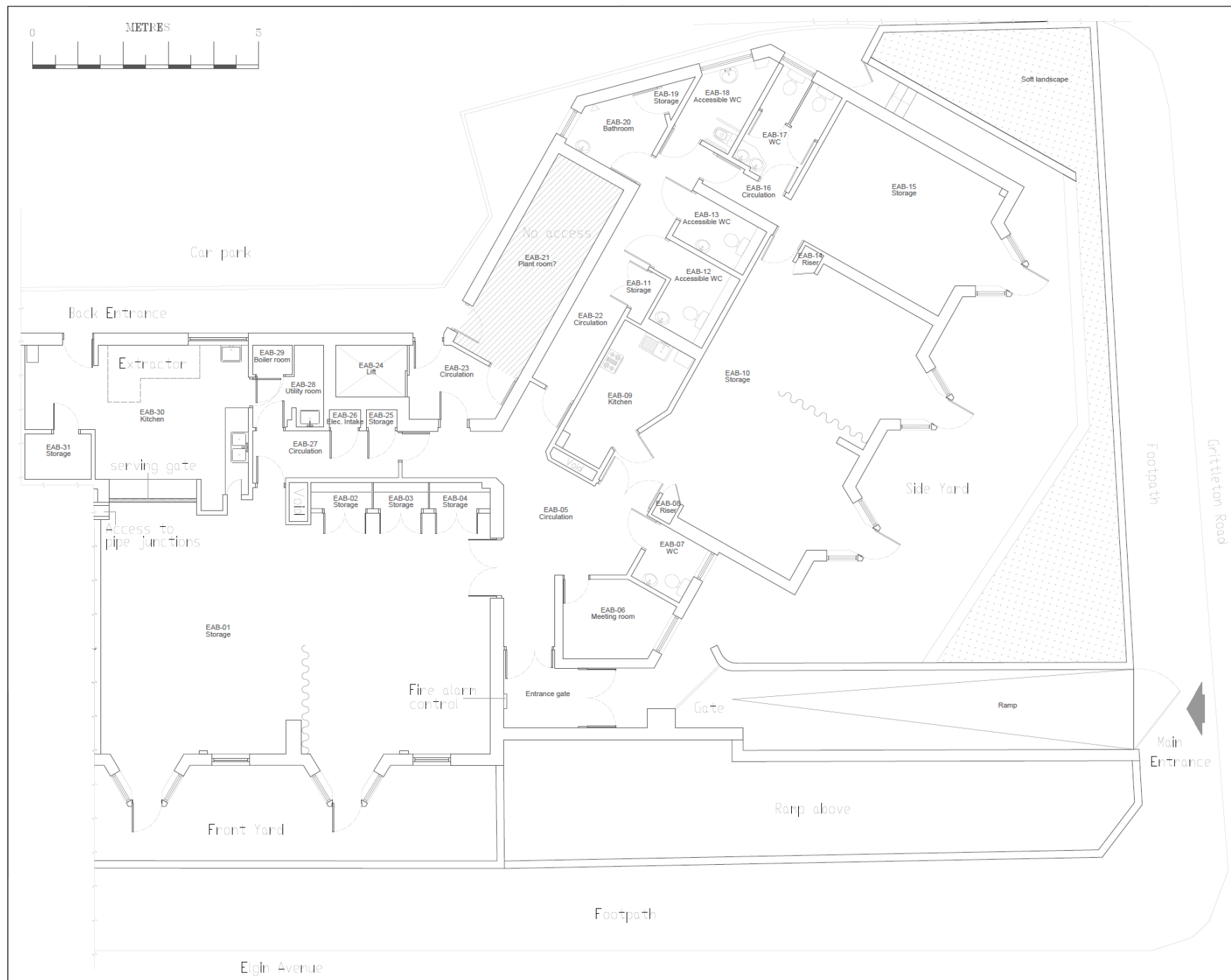
Older people's IT literacy
activities, financial literacy &
support classes, homework
clubs



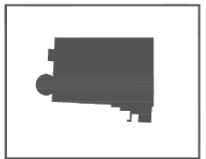
Social & networking
activities, film club, advice
surgeries/drop-ins, support
groups, bingo

Group activities,
exercise/dance/physical
health activities

EHHCH technical floorplan



DO NOT SCALE FROM DRAWING. ALL DIMENSIONS MUST BE TAKEN ON SITE.



NO	Initial Supply	KI	KI	02/10/2022
Rev	Description	DN	CHK	Date



Property: Elgin Avenue, 61-63
W9 3QP
Title: Basement Floor Plan

Area Information	Job:	CAD Surveys
Total Site Area:	626.4m ²	Scale: 1:100@A3
Gross External Area:	36.1m ²	Date: 03/10/2022
Gross Internal Area:	331.0m ²	Survey: 27/09/2022
Total Room Area:	312.0m ²	Drawn: KI
Net Internal Area:	215.4m ²	Checked: KI
Filename:	Elgin Avenue.dwg	
Drawing No:	1/1	