

# Parsons North Development

Westminster City Council are delivering 60 new homes at Parsons North, which is a brand new development on the Hall Place Estate. 19 of these homes will be affordable.

As part of this development, we are proposing to make improvements to Parsons House. These will include redesigning the outdoor space, entrance, lobby and residents' room.

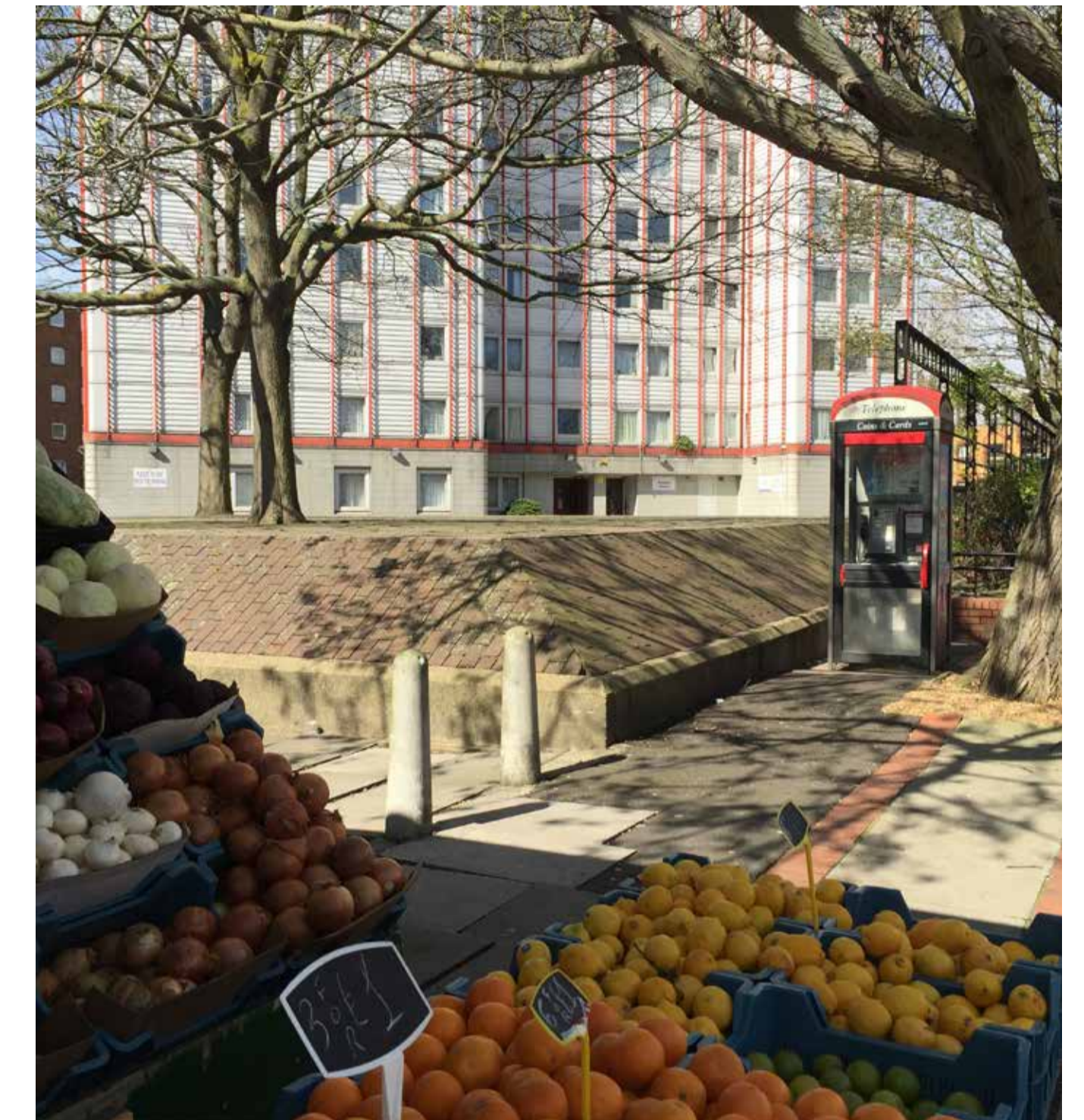




# Proposals for Parsons House enhancements

## Key Aims

- Improving the public space
- Providing a new entrance
- Enhancing the lobby
- Delivering a new residents' room

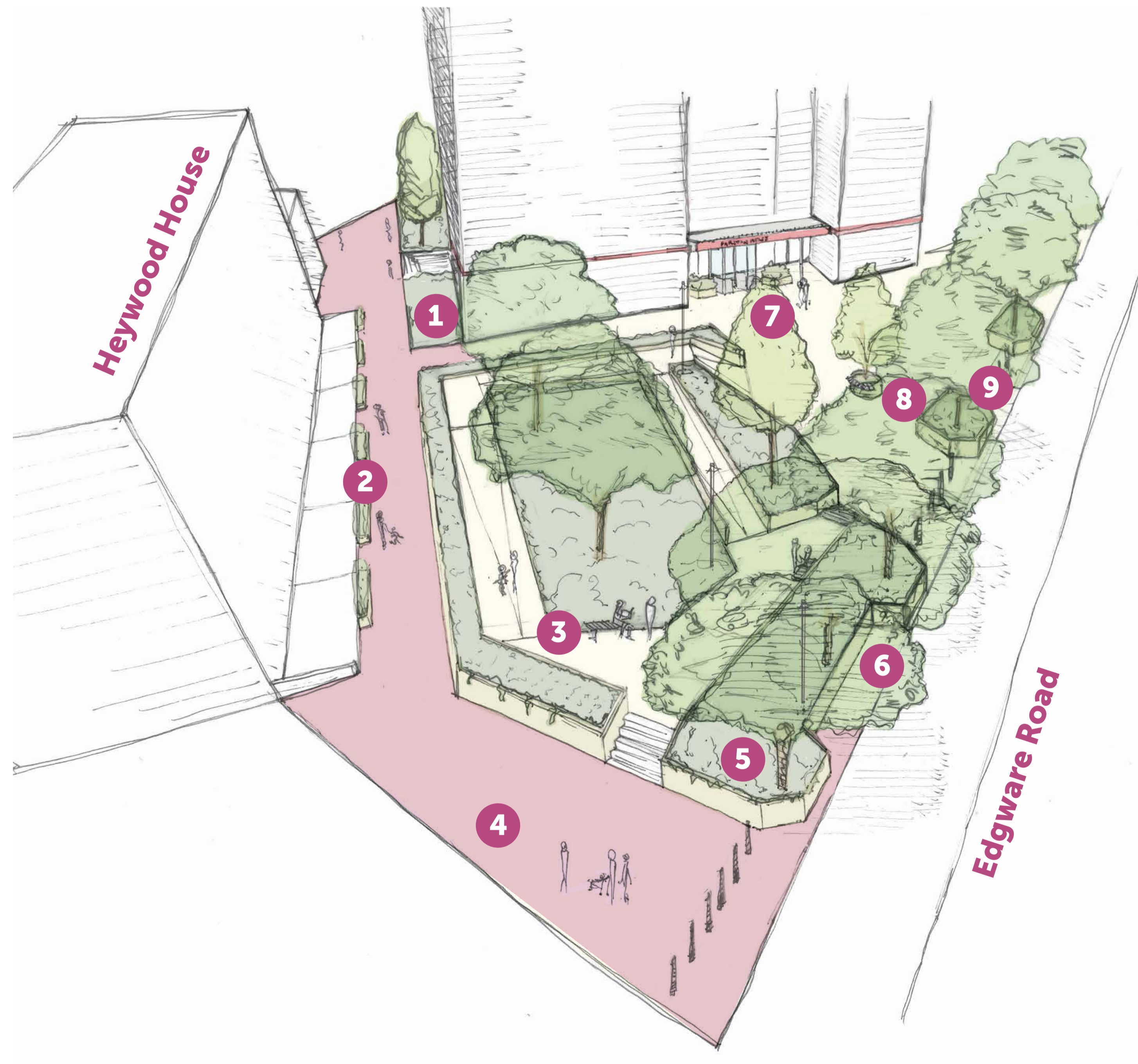


Existing entrance to Parsons House



# An improved outside space for residents to enjoy

Part of the proposed work includes improving the surrounding landscape. The proposal aims to breathe life into an under-utilised space and improve the accessibility of the building from Edgware Road. This will be achieved by reducing the raised platform and creating a pleasant environment for the community to enjoy.



1 New trees and shrub planting along the south side

2 Outdoor planting to provide buffer to Heywood House

3 Accessible new space for both new and existing residents to relax and enjoy

4 New public paving and bollards

5 New planting to sloped sides of existing raised edges

6 Layout of planters to incorporate area for recycling bins

9 Outdoor planting added to existing trees to reduce poor and uneven surfacing around base of the tree

8 Improved pathway and raised area reduced in size

7 New entrance porch with canopy above



# An improved entrance

The proposed changes to Parsons House include the addition of a new entrance porch and canopy.

## Key Improvements

- New entrance lobby and canopy extension
- New and improved signage
- Improved external lighting

### A close-up of the new signage\*



\*This image is indicative of the signage and has been created using a computer programme



First impression of proposed entrance

## Material Selection

- 1 Aluminium roof
- 2 Steel structure: light grey
- 3 Metal signage: red (to match existing red banding)
- 4 Window frame: dark grey
- 5 Tiling: white (matches current Parson House exterior)
- 6 Landscape: new outdoor planting and paving to public space



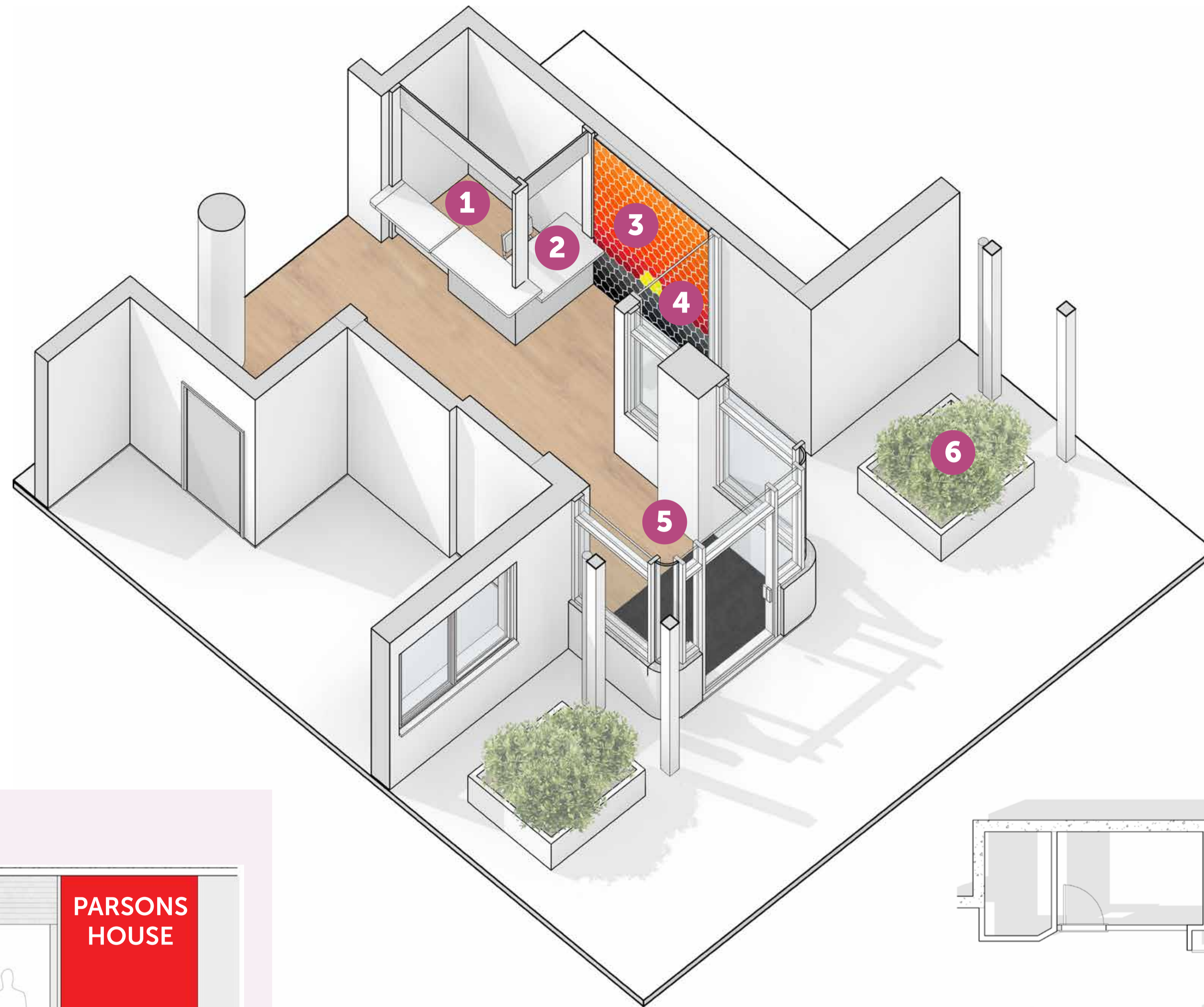
# A remodelled lobby

The entrance lobby has been reconfigured to improve security and accessibility.

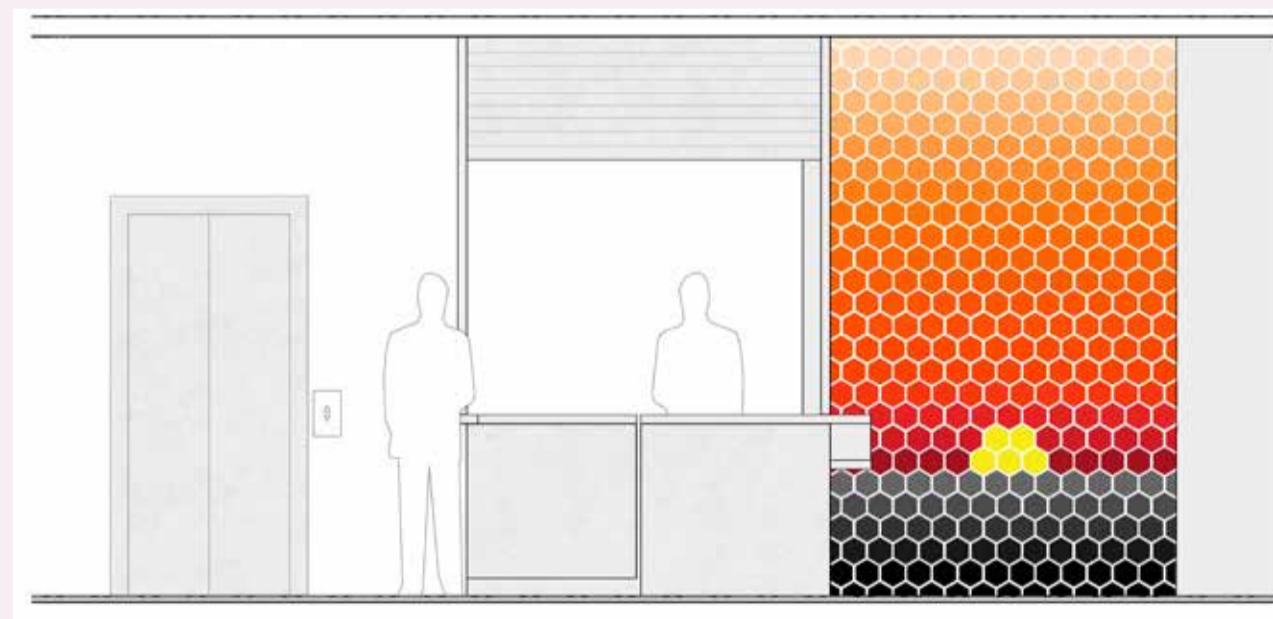
By adjusting the layout of the concierge space, an opportunity to include a feature wall has been created.

## Key Improvements

- 1 New concierge space
- 2 Accessible lower concierge desk for wheelchair users
- 3 New feature wall
- 4 Improved visibility for security
- 5 New entrance porch
- 6 New planters



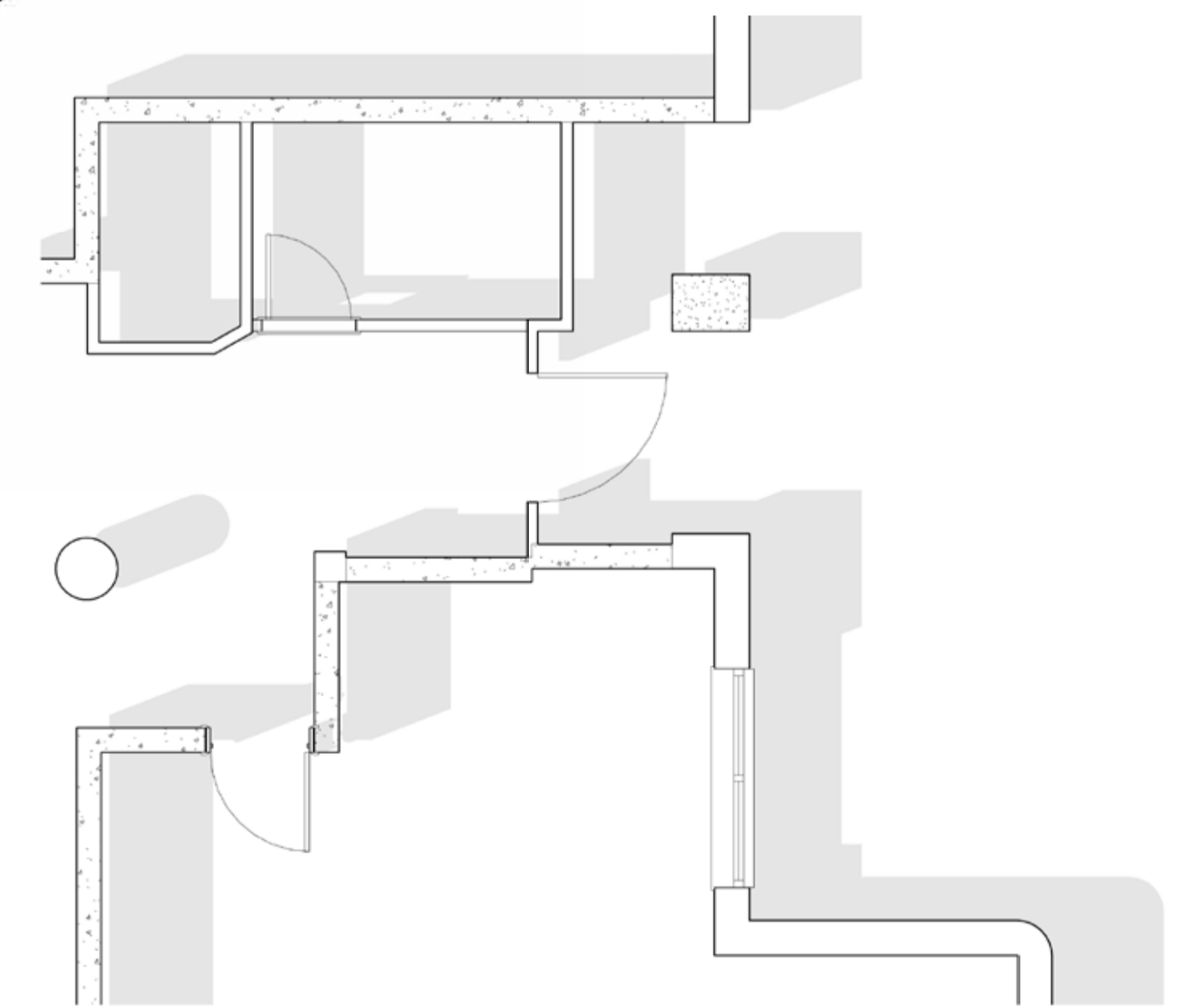
## Feature wall options – Have your say



Option 1:  
Tiled feature wall  
(Colour scheme indicative)



Option 2:  
Painted feature wall  
(Colour scheme indicative)



Sketch plan of the lobby



# A new residents' room

The new room will be enlarged by opening up existing spaces to provide improved facilities. The existing kitchen has been upgraded to enable residents to prepare food for functions such as birthday parties and community events.

## Key Improvements

- 1 New kitchen with addition of a dishwasher
- 2 New flooring
- 3 Accessible toilet
- 4 Flexible event space
- 5 Presentation monitor

## Flooring Material

American Oak Vinyl

