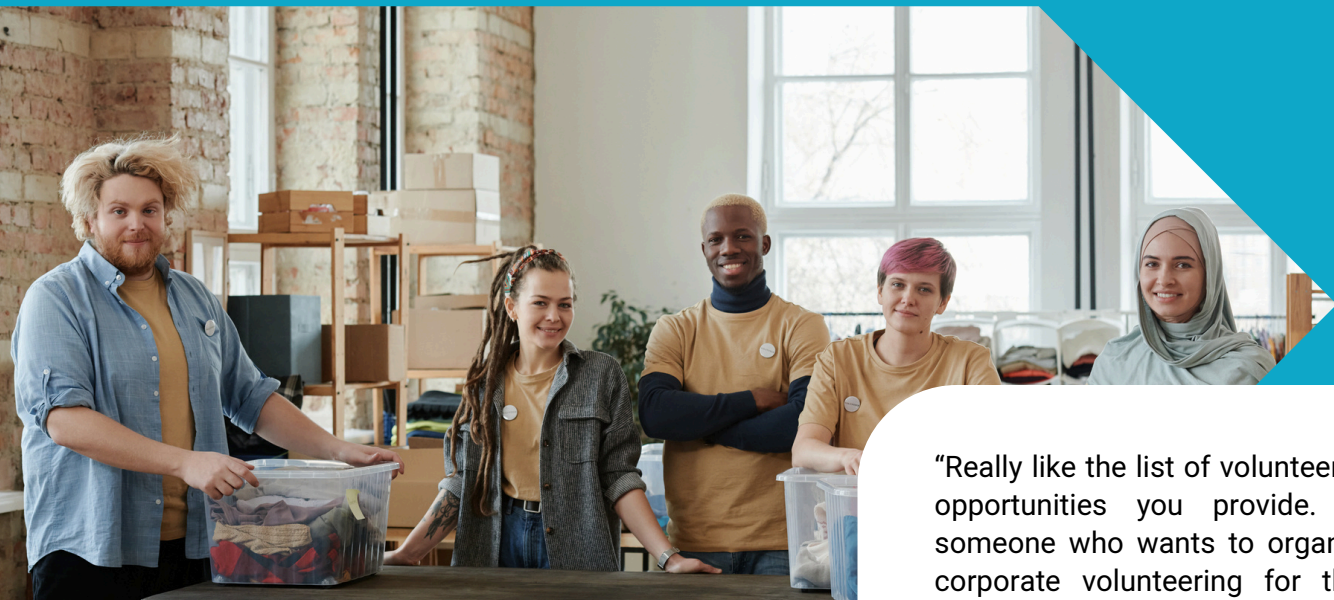


WINTER 2024 CIP bulletin



“Really like the list of volunteering opportunities you provide. As someone who wants to organise corporate volunteering for their team at work, this is a super useful resource.”



**Member of the Council's
Responsible Business Network**



City of Westminster

Winter 2024 CIP bulletin



In 2023/24, £653,000 was raised in sponsorship for local community projects and over 16,000 hours of volunteers' work was dedicated by our business partners to Westminster communities.

I hope you will join us in our mission to build a Fairer Westminster by supporting projects led by our fantastic local charities.

Cllr. Adam Hug, Leader,
Westminster City Council

It is my pleasure to introduce this edition of the Community Investment Portfolio bulletin - our newsletter for members of the Responsible Business Network - to learn more about voluntary and community sector projects that are most in need of support. Westminster City Council is committed to delivering a Fairer Westminster for all, and we continue our focus on supporting our residents through the cost-of-living crisis.

With a £25m support package, we've delivered free school meals across early years, primary and secondary settings, have granted help for school uniforms, an expanded holidays and activities programme, among other supportive measures.

Through our Social Value programme, we continue to ensure that suppliers and property developers benefit local communities.



Contents

- Group volunteering.....2-6
- Young people.....7-11
- Older People.....12,13
- Homelessness.....14
- Community initiatives.....15-19
- Health & wellbeing.....20-22
- Other programmes.....23
- Contact.....24



Group volunteering



PULLEN DAY CARE CENTRE - FESTIVE ACTIVITIES

The Pullen Day Centre provides a variety of services and social activities for up to 25 older local residents who have been referred by their GP or social care services. These individuals, who experience mild dementia, benefit greatly from connecting with people beyond the centre's staff.

We welcome volunteers to help run social activities, such as games, arts and crafts, and festive events, that keep older adults engaged and active. These activities make a meaningful difference in combating loneliness and isolation among our seniors.

→ **Volunteering: 2 to 4 people** per session.
Dates and times: Tuesday, Wednesday or Friday from 1pm to 3pm.
Location: Pimlico.

→ **Item donations:** arts & crafts materials, games (e.g. Famous Faces or memory games), refreshments for festive parties.

Financial and/or item donations:

- 2 wheelchairs, £300 each
- Adjustable small tables and/or chairs

GET INVOLVED

AGE UK - SMARTPHONE ASSISTANCE FOR OLDER PEOPLE

Age UK Westminster supports older people who want to learn how to use their digital devices more effectively by providing IT drop-in sessions at local libraries across the borough.

We would benefit from corporate volunteers to assist with drop-in sessions aimed at helping older people with questions about their mobile phone usage.

→ **Volunteering: 2 to 4 people** per session, 1.5 to 2 hours per session.
Dates and times: various dates.
Location: various Westminster libraries.

→ **Item donations:** any laptops and/or digital devices.

GET INVOLVED



DEMENTIA AND MEMORY RESOURCE CENTRE - FESTIVE ACTIVITIES

The Dementia and Memory Resource Centre provides a range of services to help people affected by dementia. Through support, therapy, and social activities we help those living with dementia to regain skills, reduce confusion, and encourage social interaction.

We welcome volunteers to support our coffee mornings by serving refreshments and assisting participants with social activities like arts and crafts or games to keep them engaged and active.

→ **Volunteering: 1 to 5 people.**

Dates and times: flexible.

Location: Royal Oak, W2.

→ **Item donations:**

- **REAL** Christmas tree, lights and baubles
- Christmas decorations for the centre rooms
- Refreshments for festive parties
- Arts & crafts materials
- Games (e.g. lightweight badminton rackets, punch balloons - which are tougher than regular balloons)

GET INVOLVED

IN DEEP - LUNCHES AND FESTIVE GIFTS

In-Deep Community Task Force is a registered charity that helps people with special needs in the South of Westminster and Lambeth. We offer friendship by providing a wide range of activities and services to those living in the area, as many have no family (or family that lives far away) and are on low incomes.

Volunteers are needed to help at the monthly lunch club for isolated older people. Support is needed to set up the hall, serve lunch (jacket potatoes, choice of filling, side salad), make and serve tea and coffee, and tidy up and clear out at the end.

→ **Volunteering: 2 to 5 people.**

Dates and times: Wednesday 13 November and Monday 4 December 2024 (with local school choir singing), from **10.30am to 4pm.**

Location: Grosvenor Hall, SW1P.

Financial support: £500 to cover activity costs.

Financial and/or item donations:

- New items from a list provided, £10 to £15 each item for festive gifts for children from 3 years old onwards
- Gift vouchers for older young people up to 24 years old with SEN

Volunteering: around 5 people to wrap up the presents.

GET INVOLVED





LONDON BASKETBALL ASSOCIATION - VARIOUS ACTIVITIES

The London Basketball Association (LBA) is a charity that brings positive social change to the most disadvantaged communities in London through basketball. We want to make sport more easily accessible to young people as we see sport as an integral part of the society, a practice that brings communities together and creates employment and growth opportunities.

Volunteering:

- **Corporate volunteers** to help at the basketball events.

Dates and times: weekly scrimmages on **Thursdays from 6pm to 8pm** at St. Augustine Sports Hall in Kilburn and on **Sundays from 3pm to 5pm** at Jubilee Community and Leisure Centre.

- **Professional** to support with pushing the ROC FRAMEWORK (i.e. the **development of grassroots, basketball officials, coaches, and referees**).
- **Media crew member.**
- **Chair of Board of Trustees.** Experienced and dedicated professional to serve as Chair of Board of Trustees, located in London or remote.

GET INVOLVED



HOME START - FESTIVE HAMPERS

Home-Start is a charity supporting refugee families expecting a baby or with young children, and that have been placed in Westminster, Kensington and Chelsea, or Hammersmith and Fulham.

We are here to befriend families experiencing difficulties and offer support when they need us most! The winter months are particularly tough, especially due to the ongoing cost-of-living crisis, so we are looking to offer food hampers to as many Home-Start families as possible this festive season.

Financial and/or item donations: food items and treats to go in the hamper. The aim is to support **240 families**, as we did in 2023.

Volunteering: corporate **volunteers to run a food collection drive at their office, prepare the hampers and deliver them** to the Home-Start hub.

Dates and times: hampers must be delivered by **Tuesday 10 December 2024** to our Marylebone Home-Start hub.

GET INVOLVED





ONE WESTMINSTER - LEARNING DISABILITIES GROUP PARTY

One Westminster exists to serve the voluntary sector in Westminster City Council.

Our Learning Disabilities Volunteering Scheme (LD group) helps people with a learning disability gain a volunteer role that will help build their confidence and gain new skills. The aim is to ensure that volunteering is accessible by providing additional support throughout the whole process of from obtaining a voluntary placement up until the first few months of working as a volunteer.

We also facilitate group activities that provide the LD group members with social contact and interaction.

Financial and/or space donations:

- **Sponsorship for refreshments, prizes, and venue hire** (as needed) for the festive party.
- An organisation to provide its office or community hall as the party's venue.

Volunteering: 5 to 10 people to help run fun and interactive activities like a quiz or karaoke, together with LD group members.

Dates and Times: December 2024.

GET INVOLVED



SINGLE HOMELESS PROJECT - EMPLOYMENT PROGRAMME

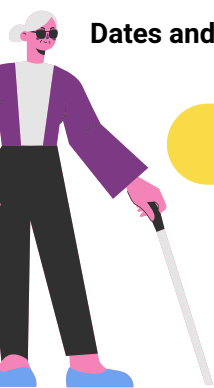
Single Homeless Project (SHP) is a charity that works to prevent homelessness and help vulnerable and socially excluded people to transform their lives by providing them with support and accommodation, and promoting health and wellbeing to help them move on from homelessness for good.

Our team works with individuals to set career goals, understand training that is necessary for their employment prospects, run CV and IT workshops, and source jobs. Every year, approximately 300 people take part in this programme with almost 100 going on to find secure employment.

Financial support: sponsorship of £10k to £35k for 12 months.

Volunteering: employee volunteers from sponsoring partners are welcome to get involved in the employment programme and help **deliver workshops**, or support clients on a one-to-one basis with their education, training, and employment needs.

GET INVOLVED





WESTMINSTER LIBRARIES AND ARCHIVES

The Libraries and Archives team in Westminster and the Royal Borough of Kensington and Chelsea has a large collection of rare and important archive material relating to both boroughs. Similarly to the National Archives, we keep important materials too, and welcome companies and other organisations to participate in developing these archives for posterity.

In Westminster, there are over 800 years of documented history including thousands of prints and drawings, rare photographs, maps and plans, sketch books,, and many theatre programmes and playbills.

→ **Volunteering:** corporate volunteers are invited to work to connect people with this history and help support the **preservation of archives** for researchers and future generations.

Financial support: £435 for one day, £220 per half day, £50 per person with other individuals.

These sessions are an opportunity for teams to work together, share experiences, and develop new skills and knowledge*

→ **Financial support:** you can also sponsor a record to be conserved for the future.

GET INVOLVED



PIMLICO TOY LIBRARY - VARIOUS ACTIVITIES

Pimlico Toy Library supports families with children by providing a wide range of stimulating activities and services such as toy-loan sessions (we have a toy stock of 1,000 items) and holiday activities. Children can build their physical, mental, and emotional skills, while adults are able to strengthen their parenting abilities.

→ **Volunteering: professional volunteers** to provide **governance expertise for staff and trustees** on HR, reviewing policies and procedures, and strategic planning.

→ **Pro-bono refurb: reflooring** of the Toy Library's interior vinyl floor.

→ **Financial support or professional site maintenance checks of £4000** for: a fire extinguisher, emergency lighting, PAT electrical equipment testing, monthly water temperature checks, twice-a-year Legionella checks; and quarterly deep cleaning of exterior walls and windows.

→ **Spaces: large, child and family-friendly venues** with interior and exterior spaces needed throughout the year for activities such as music workshops.

GET INVOLVED



Young people

Number Champions

1 2 3 4 5

fun + skills = confidence

in
deep*

*befriending the community

NUMBER CHAMPIONS - MATH SKILLS MENTORSHIP

Number Champions is a charity that supports primary school children across London with numeracy skills.

*We are looking for volunteers to work one-to-one with 6 and 7 years old children to help them gain confidence and skills in maths. At this age, the maths required is simple arithmetic, and full training and support will be provided. **The key requirements are interpersonal skills and a passion to help children achieve their full potential!***

→ **Volunteering:** people to mentor children on maths.

Dates and times: half-hour sessions on a weekly basis for at least 2 children consecutively. Term time only, and for the full school year from September 2024 onwards.

Location: Christ Church Bentinck Primary School, NW1. Other schools are also available.

GET INVOLVED



IN-DEEP / TRIPS AND FESTIVE EVENTS

In-Deep Community Task Force is a registered charity that works mainly with older people and young people with special needs in the South of Westminster and Lambeth.

Financial support: £2,150 to sponsor our **Christmas event**. It covers the costs of the Christmas dinner for 90 SEN children and their families.

Dates and times: 14 December 2024.

This will be a 3 course meal dinner; with live entertainment and presents as well*

Financial support: £760 to sponsor a trip for **16 families and 3 volunteers** to see the Trip to Swan Lake theatre play.

Dates and times: 12 January 2025.

Spaces: office or studio space with **2 to 3 desks**, also to run **music and art therapy sessions** as well as **small group sessions**.

Dates and times: to start in February 2025.

GET INVOLVED





PIMLICO TOY LIBRARY - DAY TRIPS AND PLAY SESSIONS

Pimlico Toy Library supports families with children by providing a wide range of stimulating activities and services such as toy-loan sessions (we have a toy stock of 1,000 items) and holiday activities. Children can learn and practice their physical, mental, and emotional abilities and adults can develop their parenting skills.

Financial support:

- **£2,500 per coach/trip**; including coach, entry to the venue, train ride inside the venue, and refreshments costs for a **school holiday trip for families with children** from 0 to 11 years old.
- **£461** for each of our 294 **Stay Play sessions**. Helps cover the cost of staff, venue, utilities, and materials.
- **£3000** to provide **short courses** (e.g baby massage). **5 sessions of 1.5 hours each for 5 families.**

Volunteering: people to support activities during school holidays as well as on day trips.

Item donations: **3 new laptops** to update staff devices and enable provision of electronic sign-in for members.

GET INVOLVED



LBA - BASKETBALL PROGRAMMES AND EVENTS

The London Basketball Association (LBA) is a charity that brings positive social change to the most disadvantaged communities in London through basketball. We want to make sport more easily accessible to young people as we see sport as an integral part of the society, a practice that brings communities together and creates employment and growth opportunities.

Financial support: **£21,549** to run the **Westminster School League programme for the season**. This will involve 750 people aged 11 to 18 years old and cover 33 hours of development from playing the sport to getting qualified.

To become an **Associate Sponsor**, a **minimum £8,000** contribution is required.

We also welcome financial contributions of any size to help towards the full cost of the programme*

Financial support: **£2,500** to sponsor the **ALL-STAR RUN Basketball event**, a celebratory basketball event showcasing local talent and promoting women's participation in the sport.

Spaces: **meeting room** for **quarterly** trustee meetings and guest speaking sessions.

GET INVOLVED





2-3^o DEGREES

CARDINAL HUME CENTRE - SERVICE EXPANSION AND EMPLOYMENT SUPPORT

The Cardinal Hume Centre works with young people, children, and families in Westminster to address homelessness and poverty and break its cycle into later life.

Every year, we support over 1,300 young people, parents, and children who are homeless, living in temporary or unsuitable accommodation, refugees, asylum seekers and individuals who have had to flee abusive homes.

→ **Financial support: £5,000 to £10,000 annual donations** for the next 3 years to support the **expansion of services** due to the increased community need.

→ **Food and/or item donations: food and essential products.**

→ **Volunteering:**

- Businesses can join the **Corporate Volunteering Membership Scheme** to unlock opportunities for employees to get directly involved in the Centre's work.
- **Professional volunteers to offer employment support to lead service users into employment.** Opportunity to organise an insight session into the world of work, offer work placements, or become a professional mentor to help offer advice and guidance.

GET INVOLVED

2-3 DEGREES - MASTERING MY FUTURE PROGRAMME

2-3 Degrees is a youth charity supporting young people to maximise their potential and employability prospects. We believe every young person has a wide range of potential, so they have designed the programme to help unlock and maximise young people's potential.

Through various fun activities, networking and presenting, they help young people identify their superpowers, give them the tools to articulate them and help them gain clarity on where to find and create opportunities to take their career to the next level and maximise their potential.

Volunteering: employers in Westminster to host **insight days** for our **employability programme Mastering My Future.**

Financial support: corporate partners to help sponsor the programme.

GET INVOLVED





mosaic LGBT+ young persons' trust

THE SCREEN FILM COMMUNITY - WORKSHOPS

The Screen Film Community is a charity that provides industry-standard skills training in the Film & TV Production, Game Design, and Coding industry aimed at vulnerable and hard-to-reach people.

Our programmes aim to encourage these young people to participate, as well as to attract school leavers with few qualifications that might never consider this industry.

We are looking for sponsorship to run the workshops for the Film & Television and Games Design hubs' programme in 2024 and 2025.

Financial support:

- **£25,000** sponsorship to run **50 workshops**.
- **£2,000** to raise social enterprise income by providing industry standard **filmmaking skills to corporations** (e.g. conferences).

Volunteering: a unique experience for a **team of business employees** to be involved in **filmmaking, team-Bonding workshops**; a discovery day for screenwriting, camera, directing, and film shoot sessions. Cost is **£2,000 per team day**.

[GET INVOLVED](#)

MOSAIC TRUST- WORK EXPERIENCE PLACEMENTS

Mosaic LGBT+ Young Persons' Trust is a charity that aims to support, educate, and inspire young LGBT+ people in London.

We are seeking corporate partners to host work experience placements for young LGBT+ individuals, with support from Mosaic staff. Your involvement can make a meaningful impact on their journey into the workforce.

Financial support: £3,000 to join the scheme, plus compensation for young person at London Living Wage.

This program offers you the opportunity to host young LGBT+ individuals, aged 16 to 25, in your office for 2 to 3-week work experience placements. As part of the scheme, your staff will receive training on working with LGBT+ individuals and gain valuable insights on recruiting and supporting diverse talent.*

[GET INVOLVED](#)





GREENHOUSE SPORTS - SCHOOL PROGRAMMES

Greenhouse Sports is a youth charity running sports programmes in 9 Westminster schools. The programmes deliver intensive sports coaching and mentoring to develop young people from disadvantaged communities.

Through the magic of sports and transformative mentoring, we create positive environments where young people can build confidence and feel a sense of belonging; giving every person a fair chance to succeed. In 2023/24, we engaged over 8,800 young people and delivered over 62,000 coaching hours!

→ **Financial support:** £50,000 to run **Greenhouse Sports programmes in one school.** It includes the cost of full-time coaching, kit, equipment, extracurricular trips, overheads, impact measuring, etc.

→ **Volunteering:** employees of sponsoring businesses can get involved in **sports sessions** for amazing team-building days that offer new experiences and mentoring opportunities for our young people.

GET INVOLVED



DIVERSITY ROLE MODELS - EDUCATIONAL WORKSHOPS

Diversity Role Models is a dynamic charity promoting understanding and acceptance of individual differences and the end of LGBTQ+ bullying in schools. We do this by harnessing the power of storytelling and delivering pioneering educational workshops.

The workshops teach young people about diversity, helping them recognize and appreciate differences in others and encouraging them to stand up for others rather than remain silent. Volunteer role models are central to the program, sharing their own journeys to living happy, fulfilling lives to inspire others.

Following the impact evidenced by the pilot project "Embracing Difference, Ending Bullying", we are keen to extend it into new schools in Westminster*

← **Financial support:** sponsorship of £5,000 to deliver **12 subsidised workshops**, directly benefiting **324 young people and 2 staff/governor/parent**; and **carer trainings** that directly benefit **20 to 40 people**.

← **Volunteering:** opportunity to get involved as **diversity role models** in schools.

GET INVOLVED





Older people



ADVANTAGES OF AGE - STARTUP SCHOOL FOR SENIORS

Advantages of Age is a social enterprise that delivers business support programmes for people aged 50 years old and over. Their flagship programme is the award-winning Startup School for Seniors, which helps participants turn their business ideas into reality.

We are seeking corporate sponsorship for one or more places in the Startup School programme!

Financial support:

- **£9,700** to fund an **8 week cohort of the programme**. This includes **20 participant places** with online learning materials, 2 one-to-one mentoring sessions, and weekly group exploration and collaboration sessions.
- **£2,000** for a **branded grant incentives package**, which provides 3 grants and ongoing membership in the Get Work Done Club for the cohort.
- **£497** to sponsor **1 participant place**, covering online learning materials, 2 one-to-one mentoring sessions, and weekly group online sessions.

GET INVOLVED

CHINESE COMMUNITY CENTRE - LUNCH PARTY

The London Chinese Community Centre (CCC) is a vital social and learning hub for the Chinese community. It provides a wide range of services and organises a variety of activities to improve the quality of life and well-being of the Chinese community, particularly those who are disadvantaged, isolated or vulnerable. In particular, we aim to assist people of Chinese heritage of all ages to better integrate into UK culture and society.

Financial support:

- **£1500** to help cover the costs of a **Christmas lunch party for 80 elderly CCC members**.
- **£300** helps subsidise **2 main dishes**.
- **£800** for a **Chinese Christmas cake for 200 members**.

Dates and times: 17 December 2024.

Location: the Chinese Community Centre, WC2H.

Volunteering: Cantonese or Mandarin speaking is essential.

The CCC will offer free advertising at their events and social media channels for sponsoring businesses*

GET INVOLVED





OPEN AGE / PRO-BONO PAINTING

For 30 years, Open Age has been championing an active life for older people enabling anyone aged 50 years old or older to sustain their physical and mental fitness, maintain an active lifestyle, and develop new and stimulating interests, and most of all, have fun!

Our activities aim to combat loneliness and isolation and improve the health and wellbeing of older Westminster, H&F and K&C residents. Activities include health and fitness classes (e.g. dance, yoga, chair exercise, walking groups, creative and performing arts sessions, daily computer classes and drop-in sessions, and outings and regular visits to attractions in and around London.

→ **Pro-bono refurb:** we are seeking a **team lead by a professional painter and decorator** to **freshen up the** community spaces at our Second Half Centre in Ladbroke Grove centre.

Dates and times: to be done during the **half-term week** commencing on **17 February 2025**.

GET INVOLVED

RESONATE ARTS - VARIOUS DONATIONS

Resonate Arts produces a pioneering programme of creative activities and experiences for and with people living with dementia in the boroughs of Westminster and Kensington & Chelsea. We endeavour to be a catalyst for positive change, to reduce social isolation, and to build strong communities through art.

Financial support:

- **£50** for **scarves, props, and refreshments** for a Creative Movement session for people living with dementia.
- **£100** for **percussion instruments**, to send to people who attend our **Singing with Friends choir** online.
- **£500** will enable 5 people to regularly attend **10 sessions of our Singing with Friends choir**.
- **£1000** will provide **accessible transport for 2 people who cannot use public transport**, to attend our monthly concert series Music in the Moment for 1 year.
- **£2000** will allow to **train 10 new volunteer Creative Befrienders**.
- **£5000** will help **10 people** to attend our museum-based **Cognitive Stimulation Therapy** programme.

GET INVOLVED



Homelessness

WHO IS HUSSAIN



Single Homeless Project
Preventing homelessness
Transforming lives

WHO IS HUSSAIN? - DONATIONS FOR ESSENTIALS

Who is Hussain? is a charity and grassroots social justice movement inspired by the timeless legacy of Hussain Ibn Ali.

With over 90 teams in 5 continents around the world, we are feeding, clothing and supporting the oppressed and the needy. We aim to stand against all forms of social injustice.

In central London, we run a twice-weekly distribution of essential items to rough sleepers and always welcome donations to purchase food and drinks and other essential items for people in need - for both the short and the long term.

→ **Financial support:** donations to purchase **food and drinks**, as well as **basic items** such as sleeping bags and other essentials.

SHP - GIFTS FOR FESTIVE HAMPERS

Single Homeless Project (SHP) is a charity that works to prevent homelessness and help vulnerable, socially excluded people transform their lives by providing them with support and accommodation. We support about 700 to 800 residents at one time; some are short interventions and some are longer.

Item donations: gifts donations for festive hampers for over 700 people, as part of our Christmas hamper campaign. We get essentials through food banks, so these hampers are meant to be a treat.

Volunteering: corporate volunteers are welcome to **fundraise or donate items**, and then get together to **pack the hampers** either at the homeless centre or at their company offices.

Meal vouchers can be purchased and directly donated to homeless people or those experiencing food/energy poverty through this link: <https://shop.shp.org.uk>

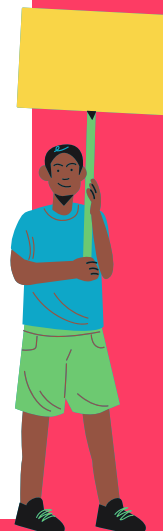
GET INVOLVED



GET INVOLVED



Community initiatives



THE CARTOON MUSEUM - WORKSHOPS AND OTHER EVENTS

The Cartoon Museum is the UK's only museum dedicated to cartoon and comic heritage, creating a future where people of all backgrounds and ages feel excited to pick up a pencil and draw. We believe that creating art promotes good mental health, reduces stress, and effectively engages marginalized communities.

All sponsors are credited on posters, the museum website, and acknowledged as part of relevant exhibits*

Financial support:

- **£700** would sponsor seats for a day in **school holiday workshops**.
- **£1000** would cover the cost of **drinks, food,** and a PA system for a **public event**.
- **£5000** would cover the full costs of a **temporary exhibition**.

Volunteering: opportunities are available during **exhibition builds, events,** and during **day-to-day museum operations**. The museum can also be hired as a venue.

Spaces: room nearby **W1A** that can be used by the director, other staff, and volunteers as needed.

GET INVOLVED

THE ADVOCACY PROJECT - ADVOCACY TRAINING

The Advocacy Project are a locally-based charity supporting vulnerable communities across Westminster. We work with an established network of local organizations, mental health trusts, and community engagement teams across the borough to ensure that vulnerable people have choice and control over their health and social care, receive support, and have a voice in expressing their needs.

We are setting up a project focused on getting people with lived experience of mental health back into work.

Financial support: sponsorship of **£1,600** to **support local volunteers to train as advocates**. They will have the chance to acquire a Level 4 Independent Advocacy qualification on completion of training.

Ad-hoc, freelance advocacy positions as well as contracted work opportunities will be available to those who have received the training*

GET INVOLVED





PDT - TRAINING AND OFFICE EQUIPMENT

Paddington Development Trust (PDT) is a not-for-profit regeneration company and social enterprise working for people, place, and community enterprise in London.

→ **Training:** we are looking for a basic introduction to **health and safety in the workplace**, either as an **e-course** or **video** that staff and volunteers can be trained on.

→ **Item donations:** **office equipment** for a new Community Champion who recently joined our team.

- **Desk with wheels**, approx 45cm x 75cm
- **Office chair**
- **Lockable pedestal with wheels**

GET INVOLVED



MAYFAIR COMMUNITY CHOIR - CHOIR CONCERTS

Mayfair Community Choir provides a friendly and free opportunity for those who live, work, or have other links with Mayfair to meet and sing. Singing together is great for reducing stress and our members comment on how good it is for mental health.

The Choir has 3 free-to-all concerts a year, and have a loyal local following linked to the Mayfair library and Grosvenor chapel - where the concerts are held.

*We are looking for sponsorship! All sponsors are credited on posters in the community, and also offered some carol singing at Christmas in offices, hotels, or pubs premises**

Financial support: £600 sponsorship would pay for a **conductor and accompanist for 3 concerts** (or most costs), including venue hire for 1 concert.

Dates and times: the Christmas concert will be held in **late November 2024**.

GET INVOLVED





pdt



where volunteering and
community action
transform lives

PDT - PRO-BONO REFURB

Paddington Development Trust (PDT) is a not-for-profit regeneration company and social enterprise working for people, place, and community enterprise in London.

The Stowe Centre is a community centre run by PDT. It offers a wide range of activities; including health and fitness sessions and organisations. Westminster residents can use the space for special events.

No significant maintenance of the building has been carried out since before the pandemic, but several volunteers have helped to repaint some of the main rooms.

→ **Pro-bono refurb:** we are looking for a professional partner or a team of professionals to undertake these works pro-bono.

- **Repainting** the staircases connecting three floors.
- **Reflooring** of the entrance corridor - the entrance corridor floor is currently bare and needs urgent reflooring.

GET INVOLVED



ONE WESTMINSTER - 10TH ANNIVERSARY AGM SPONSORSHIP

One Westminster exists to serve the voluntary sector in Westminster City Council.

Working in collaboration with the council for many years, 2024 marks an important milestone as we are celebrating the charity's 10th Anniversary! We would like to invite our partners and supporters to celebrate with us at our Annual General Meeting.

Financial support: any donations welcome to cover the **£2,000** costs for **venue hire and refreshments**. We expect around 100 attendees, including Westminster City Council commissioners, collaborators, community partners, volunteers, and supporters.

Dates and times: 19 November 2024, from **4pm to 7pm**.

Location: The Showroom space, NW1.

Donations page:
<https://localgiving.org/charity/onewestminster>

GET INVOLVED





Carers Network

CARER'S NETWORK - FESTIVE PARTY

Carers' Network is a charity that supports more than 5,000 unpaid carers across the London boroughs of Westminster, Hammersmith & Fulham, and Kensington & Chelsea. Our vision is that every carer in the area should live a fulfilling life with control over their caring role.

We are planning a festive party for around 70 to 100 carers to celebrate the tremendous work they have carried out throughout this difficult year.

➔ **Financial support: £1000** to help cover the costs of the **festive party** (e.g. refreshments).

Volunteering: up to 10 people to help help with the hall decorations, and offer games and entertainment.

Dates and times: 17 December 2024.

[GET INVOLVED](#)



PIMLICO MUSICAL FOUNDATION - WINTER LIGHTS EVENT

The Pimlico Musical Foundation is a charity providing world-class, free-to-access musical opportunities to children and adults across Pimlico. We run the adult community choir, Sing Out! Pimlico, every week in the Churchill Gardens estate and perform regularly at events in the local community.

For the last three years, we have provided music at the official opening of the Winter Lights in Churchill Gardens, led by the Lord Mayor of Westminster.

➔ **Financial support: £2000** is needed to allow the **community choir to perform** at this year's event. This would cover 7 rehearsals.

Dates and times: 22 November 2024, from 4:30pm.

[GET INVOLVED](#)





QUEEN'S PARK COMMUNITY COUNCIL - WINTER FESTIVAL AND PARTY

Queen's Park Community Council (QPCC) is London's first and only Community Council representing people living in Queen's Park Westminster, with the aim to promote a strong sense of community and increase the quality of life for all residents and visitors. We run many activities to support residents of all ages, cultures, religious and social backgrounds to live, work and socialise together.

→ **Financial support:** sponsorship of **£500** to cover the costs of **refreshments and materials for our Winter tea party.**

Volunteering: up to **5 people** to help at the event and facilitate activities.

Dates and times: 17 December 2024.

→ **Financial support:** starting at **£500**. We are seeking **sponsorship for the Winter Festival event**, that offers businesses a stall at the fair, allowing them to engage directly with residents.

Companies will be prominently promoted in the Queen's Park Voice Magazine, which reaches 14,000 residents across 5,000 households!

Item donations: tables, chairs, shelves, and desks needed for office storage.

GET INVOLVED

WESTMINSTER FOODBANK - FOOD DONATIONS AND PRO- BONO REFURB

The Westminster Foodbank located at Westminster Chapel is a Trussell Trust network member with the aim to support residents facing hardship due the cost-of-living crisis. We provide three days' worth of nutritionally balanced food to Westminster residents affected by food poverty.

← **Financial and/or food donations:** there has been a significant drop in donations recently, so we are appealing for urgent donations of **non-perishable food items and/or funds to purchase stock.**

<https://www.giveasyoulive.com/join/westminster-foodbank>

← **Pro-bono refurb:** we are looking for a **construction company partner** to carry out pro-bono refurbishment works to **refurbish the Foodbank room** (to increase storage capacity).

GET INVOLVED





Health & wellbeing



MIND - WELLBEING TRAINING AND WORKSHOPS

Westminster Mind offers a comprehensive range of mental health training and workshops, from Mental Health First Aid (MHFA) to bitesize Wellbeing Workshops for all staff. Training programs for employees are designed to enhance workplace wellbeing, decrease stigma, and foster a culture of openness around mental health.

We are seeking support through financial sponsorship or donation opportunities. Corporate contribution enable us to deliver vital mental health training to staff and local professionals in Westminster.

→ **Financial support: £10,000** for a **2-day accredited Mental Health First Aid (MHFA) training**. Sponsorship covers 2 courses for up to 16 employees per course.

→ **Financial support: £3,000** for a **half-day Mental Health Awareness Training workshop** for managers. Sponsorship covers 2 courses for up to 16 participants per course.

→ **Financial support: £4,400** for **60-min Wellbeing workshops for all staff**. Sponsorship covers 8 sessions over 1 year, for up to 20 participants per session.

[GET INVOLVED](#)

MIND - THERAPEUTIC SESSIONS

Mind in Brent, Wandsworth, and Westminster (BWW) is a leading community-based mental health charity.

We have recently established a community hub at the Great Western Studios in Westminster. The programme supports over 250 people through a range of initiatives such as therapies, Life Skills workshops, and Befriending, among others.

→ **Financial support: £25,000** to facilitate the delivery of over **750 therapeutic sessions** at the Great Western Studios community hub. It also includes other costs.

Dates and times: from April 2024 to March 2025.

→ **Volunteering: employee volunteering opportunities are available.** Staff can volunteer on eco-therapy programmes, aligning with social values and fostering personal and professional development.

[GET INVOLVED](#)





UNFOLD - MENTORING FOR YOUNG PEOPLE OR MOTHERS.

Unfold supports families and young people in Westminster and the neighbouring boroughs, enabling them to identify and achieve goals that matter to them so they can independently manage the challenges they face.

Our mentoring programmes support the people who face the greatest challenges and levels of exclusion, like families and single headed households led by a woman.

→ **Financial support:** donations of all sizes are welcome. **£1,300** could fund **6 months of specialised, one-to-one mentoring** for a young person or mother.

→ **Volunteering:** staff to join our **mentoring** family. Mentoring allows organisations to understand life in Westminster from the perspective of the community they serve.

We provide full training and ongoing support in the community of volunteers*

Commitment of 1 hour per week for 6 to 12 months.

GET INVOLVED



RESONATE ARTS - BEFRIENDERS

Resonate Arts produces a pioneering programme of creative activities and experiences for and with people living with dementia in the boroughs of Westminster and Kensington & Chelsea. We endeavour to be a catalyst for positive change, to reduce social isolation, and to build strong communities through art.

Creative befriending can help increase a person's confidence, boost mood and motivation, and help reduce loneliness and isolation following a dementia diagnosis. Volunteers will be matched with a person living with dementia to spend some time together using creative arts such as painting, textiles, music, sculpture, photography, and/or writing poetry/stories as a means to build a strong social connection with the person.

→ **Volunteering:** Creative **Befrienders** to support a person living with dementia.

Commitment of 20 sessions weekly, fortnightly or monthly (depending on volunteers' availability).

GET INVOLVED





The Advocacy Project



THE ADVOCACY PROJECT - VIDEO CASE STUDIES

The Advocacy Project is a locally-based charity supporting vulnerable communities across Westminster.

We are looking for financial donations for a project focused on reducing health inequalities by creating 10 video case studies outlining people's personal stories and experiences aiming to explain to others how to access services and support, what to expect from services, and what their rights are as a patient. The video case studies will be shown at 20 community-based sessions to create a theme of peer-to-peer support across these communities.

At least 8 people with Learning Disabilities or lived experience of mental health will be involved and earn some income by participating in the project*

Financial support: £35,000, but any size donations welcome.

Volunteering: employee volunteers from sponsoring companies will be welcome to get involved and contribute to the project.

Dates and times: November 2024 to October 2025.

OUTSIDE EDGE - CREATIVE WORKSHOPS

Outside Edge Theatre Company is the UK's leading theatre company and participatory arts charity working with people affected by and at risk of addiction.

We are looking for a space in which to run our free weekly creative activities.

Spaces:

- **Large hall for rehearsals.**
- **Meeting room for our weekly Drama and Creative Writing workshops.**

For our **Write Now workshops**, we need a **room with capacity for around 15 people**. Equipment needed is tables, chairs, Wi-Fi, and a projector.

For our drop-in **Drama workshops**, we need a **room with capacity for 20 to 25 people**. Equipment needed is chairs and Wi-Fi.

Dates and times: Write Now workshops on Wednesdays from 3:30pm to 5:30pm. Drop-in Drama workshops on Wednesdays from 6:30pm to 8:30pm.

GET INVOLVED

GET INVOLVED



Other programmes

BLACK ON BOARD

Olmec is an award-winning social enterprise that has successfully delivered the Black on Board programme since 2005.

The aim of the programme is to actively **diversify boards across Westminster City Council** to better reflect our communities. Global majority applicants are provided with training and the necessary resources to apply for board and governance positions within the borough.

In March 2024, Westminster City Council commissioned a second programme and currently have 10 staff and 15 local residents engaged in the training.

Please email inclusion@westminster.gov.uk for more details on the programme or to get involved.

BOB
BLACK ON BOARD





LET'S TALK!

The **CIP bulletin** raises awareness of **community needs in Westminster City Council**. You will find numerous ways to lend your support to these critical projects.

Please email **businesscommunitypartnerships@westminster.gov.uk** for more details on any of the projects or to get involved.

Copyright @ 2024 Westminster City Council, All rights reserved.

You are receiving this bulletin because you are a member of Westminster City Council's Business Community Partnerships Programme.

If you would no longer like to receive the Community Investment Portfolio bulletin, please let us know at businesscommunitypartnerships@westminster.gov.uk.

Our mailing address is: 64 Victoria Street, London, England, SW1E 6QP.